



# Ravaglioli

## TIRE CHANGERS

G

1150.30  
magic

8945  
memory

7645

7246

7240

GTB16  
EVO

GRS926

G9156.11N



**MAGIC**



**MEMORY**



**SPEEDCHANGER**



**30 SECONDS!**

24 volt motor with = min. power  
low speed rotation = consumption





# G1150.30 MAGIC MAGIC LEVERLESS NO TIRE TOOL REQUIRED!

## MAGIC IT 30" LEVERLESS

### G1150.30 MAGIC IT

30" center locking premium no-lever system. Includes pneumatic help device, wheel lift, and inflater/bead blast. Driven by powerful 230 volt motor with true variable speed control.

#### 0-15 INVMOTOR RPM VARIABLE SPEED

The electrical motor is equipped with an exclusive and innovative inverter, which allows it to regulate rotational speed by pressing the pedal and slowing rotation speed as the stress on the bead increases (to avoid any damage to the tire).

*The real no lever tire changer*



# MAGIC

G1150.30 MAGIC IT  
+ PLUS93 + G1000A127  
+ G1000A80/S



## EXCLUSIVE AUTO-TOUCHFUNCTION



The tool enters between bead and rim



Levering on the rim, the tool pulls up the bead, minimizing tire stress



Safe and easy mounting with plastic tool, roller and rotating helper PLUS93

### EASY ROLLER



The bead-breaking is performed by means of an EASY ROLLER:

- bead-breaking in correct position
- easy rotation of the roller
- automatic side-movement of the roller
- memorized position for bead breaking of lower side



### STANDARD

#### G1000A127

Pneumatic wheel lift



Bead blaster



10" - 30"  
(254-762mm)



45" (1143 mm)



15" (381 mm)

#### TECHNICAL DATA

Handled wheels from	10"-26" (254-660mm) 12"-28" (305-712mm) 14"-30" (356-762mm)
Max wheel width	15"
Max wheel diameter	45" (1143mm)
Bead breaker pow. (each arm)	2645 lbs.
Bead breaker movement	Automatic
Rotation motor	1,5 Kw invmotor +0,75 Kw motor
Recommended air supply	8-10 bar / 115-145PSI
Power supply	1 ph, 200 / 265v

## ACCESSORIES FOR LEVERLESS MAGIC 1150.30



**G1000A81K** (10 x kit)  
Set of rubber protections for support plate



**G1000A70K** (5 x kit)  
Set of protections for pulling unit



**G1000A66K** (5 x kit)  
Set of protections of locking cone



**G1000A117**  
Upper tool  
G1150.30 MAGIC



**G1000A113**  
Upper tool  
G8945 MEMORY



**G1000A80**  
Quick-fit locking  
G1150.30 MAGIC

# G8945 MEMORY MEMORY LEVERLESS NO TIRE TOOL REQUIRED!

Made in Italy



## Easy Demounting (upper bead)

Bead demount controls: down and up and the bead is demounted



Patented tool in plastic anti-scratch material

## Easy Demounting (lower bead)



## Space Saver

Post with "space saver" vertical movement

## Tool Memory

Rim edge "memory" controls: place it first time, then it will go back to same position just pushing a pedal

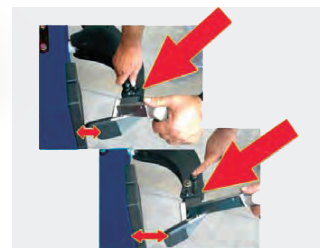
Lever for quick opening of bead breaker arm

## Easy Bead Breaking

1 + 2 + 3



Roller rotation 180°



G800A26 - Bead-breaker adapter with tilting adjustment



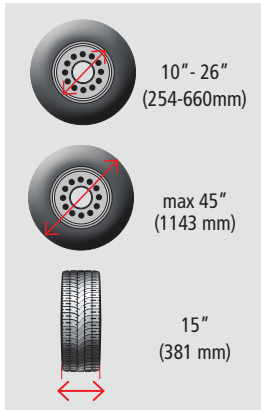
G8945DS.ITA + G800A26

# MEMORY

## 0-16 INVE MOTOR RPM VARIABLE SPEED

TECHNICAL DATA	
Handled wheels from	10" - 26" (254-660mm)
Max wheel diameter	45" (1143mm)
Max wheel width	15" (381mm)
Max side shovel bead loosener opening	17" (432mm)
Recommended air supply	8-10 bar / 115-145PSI
Rotation motor	1,5 Kw inv.+ 0,75kw motor
Bead loosener power (roller)	1200 kg (2645 lbs)
Bead loosener power (side shovel)	3600 kg (7900 lbs)

## STANDARD



Bead pusher with pulling system



Centering adaptor



Protection



TOP inflation device



Extension and guard

5 models include 1 + 2 + 3

1 PLUS91AKC HELPER

2 INFLATION BY PEDAL

3 G800 A121 WHEEL LIFT





# G7645 HIGH PERFORMANCE TILT BACK

## G7645 TILTBACK CHANGER

The large and reinforced frame grants the utmost rigidity to the structure and chucking table. The gear box is installed between two steel plates to avoid flex during operation. The extra height of the vertical post and tool shaft allow operation on tires to a max. of 17" (431 mm) width.

### CONTROLS

- Sturdy and ergonomic handle.
- Tool locking with automatic setting of appropriate distance from the rim.

### 0-15 INVMOTOR RPM VARIABLE SPEED

### ROLLER

- To facilitate arm movement during tool positioning.

### PEDAL ASSEMBLY

- Pedals in press-cast aluminium.
- The pedal assembly can be removed as an integral unit allowing easy servicing.



### TOOL

- Tool with integrated protection for alloy rims.
- Adjustable angle and rotation.

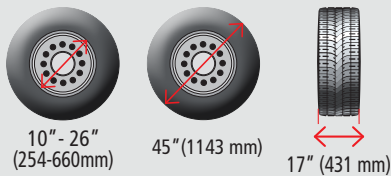
### BEAD BREAKER

- The bead breaker opening can be adjusted into 2 positions to work with extreme rapidity.
- Jointed and shaped blade to facilitate bead breaking.
- Galvanized cylinder with double operation.



### VALVE TRAY

G7645ID.26 +  
G800A26



### I-TYPE = BEAD-SEATER (TUBELESS INFLATOR)

Models with tubeless tire inflation system. The device is activated by a single pedal with two positions.



G800A116

TECHNICAL DATA	G7645
External clamping	10"-26" (254-660mm)
Internal clamping	12"- 28.5" (305-724mm)
Max. tire diameter	45" (1143mm)
Max. rim width	17" (431 mm)
Max. bead breaker opening	17" (431 mm)
Bead breaker cylinder power at 175 psi	8000lbs
Motor	220v 60 cycles 1hp
Turntable rotation speed	0-16 rpm
Max torque to turntable	1400 Nm

# G7246 HIGH PERFORMANCE SWING ARM

# G7240 STANDARD SWING ARM

Made in Italy



## G7246ID.26A SPEEDCHANGER

High performance swing arm tire changer for high volume tire centers. Exclusive 220v drive motor provides needed torque for handling today's difficult assemblies.

- 26" outside clamping
- 220 volt variable speed drive
- 8000 lb. bead breaker
- PLUS 91SA helper device optional

- Hand controlled bead breaker
- Air tank located in column
- Removable pedal assembly for maintenance
- Valve tray



### OPTION PLUS91SA HELPER



LOWER BEAD  
DEMOUNTING



G7246ID.26A +  
G800A26

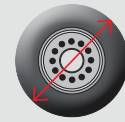
## SPEEDCHANGER

**0-15 INVE MOTOR  
RPM VARIABLE SPEED**

True variable speed control allows operator to match turnable rotational speed with the job.



10" - 26"  
(254-660mm)



46" (1170 mm)

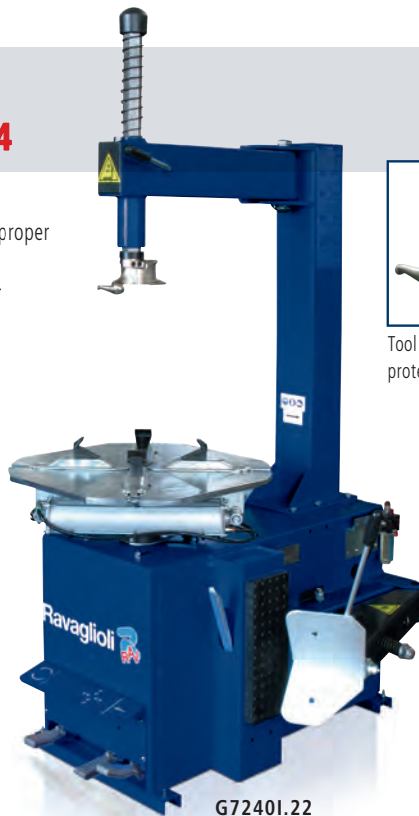


15" (381 mm)

TECHNICAL DATA	G7246ID.26A
External clamping	10"-26" (254-660mm)
Internal clamping	12"-28.5" (305-724mm)
Max. tire diameter	46" (1200 mm)
Max. rim width	15" (380 mm)
Max. bead breaker opening	15" (380 mm)
Bead breaker cylinder power at 175 psi	8000 LBS (3600 kg)
Motor	220V 1 hp
Rotation speed	0/15 rpm
Max. turntable torque	1200/900 Nm

## G7240I.22 SWING ARM 22/24

- Top quality at a value price.
- Heavy duty structure guarantees proper working conditions at all times.
- Bead breaker: galvanized cylinder with simple operation.
- Galvanized cylinder with double operation.
- Rigid self-centering chuck and wide clamping range.
- Up to 22" outside clamping.
- 110 volt single speed motor.
- 22" outside clamping.
- 24" inside clamping.
- Tire diameters of 40".



G7240I.22



Tool with intergrated  
protection for alloy rims

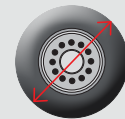


### PLUS 91N

Bead top pressing and tire lifting device for large and special tires.



11" - 22"  
(279-556mm)



40" (1000 mm)



12" (305 mm)

TECHNICAL DATA	G7240I.22
External clamping	10" - 22" (254-556mm)
Internal clamping	12" - 24" (305-610mm)
Max. tire diameter	40" (1000mm)
Max. rim width	12" (305mm)
Max. bead breaker opening	12" (305mm)
Bead breaker cylinder power at 175 psi	8000 lbs (3600kg)
Motor	110V - 1 hp
Rotation speed	9 rpm
Max. turntable torque	1200 Nm



The pedal assembly can be removed allowing easy service.

**I-TYPE = BEAD-SEATER (TUBELESS INFLATOR)**



# GTB16EVO WORLD'S FASTEST TRUCK TIRE CHANGER

## TIRE TECH GTB16EVO BULLET

### DEMOUNTS AND MOUNTS TUBELESS TRUCK TIRES IN 30 SECONDS!

This one-of-a-kind changer is equipped with four rollers with a unique form, positioned on the two sides of the wheel in diametrically opposite positions. With this system, the dismounting of the tire with bead breakers is very simple: while the front bead breakers keep the bead in the drop center, the rear ones continue their stroke until the dismounting is complete.

Full size industrial clamping unit, allowing 30% more clamping force. Clamping range from 17"-24.5" to 14"-27".

Minimum clamping height 13 3/8" allowing to clamp rims directly from the ground.

Bead breaking force increased by 20% (both front and rear rollers).

Bead breakers are made of plastic to prevent rim damage.

#### SPEED DEMOUNTING



The bead breakers are supported by two separate arms. Each has two rollers, one conical which pushes on the bead and one cylindrical which pushes the side of the tire.

#### SPEED MOUNTING



Equipped with a patented lever to ease the mounting/demounting of the tire.



Hydraulic chucking table. Suitable also for agricultural tires (+G108A24).

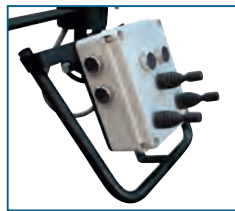
#### STAND BY

The "STAND-BY" function, totally eliminates any noise when the machine is not working.



Improves shop's efficiency up to 50%

#### Easy to use controls



All movements are hydraulically controlled from a convenient, ergonomically positioned console.

The chucking unit moves not only clockwise and counter-clockwise, but also up and down. The clamping device is designed to clamp a variety of wheels.

GTB16EVO

#### STANDARD + SUPER-SINGLE

The operating dimensions of the rim clamping unit and the head-tool carriage allows the changer to operate on a wide range of wheels, including super-single.

#### TECHNICAL DATA

Maximum wheel diameter	27" (686mm)
Minimum wheel diameter	14" (356mm)
Gear box motor	3 HP
Max diam. central hole	11 1/2" (288 mm)
Min diam. central hole	3 1/2" (85 mm)
Power supply	3 ph - 220 v
Rotating speed	10 rpm

11" - 27"  
(280-686mm)

52"  
(1320mm)

21"  
(540 mm)

#### STANDARD on GTB16N and GRS926



G108 A3 Patented truck lever

#### OPTIONS



G108A2  
Jaws for alloy wheels



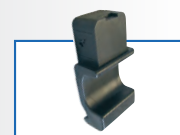
G90A6  
Bead-locking clamp for alloy rims



G108A8  
Plastic coated rings kit



G108A7  
Jaws for Dayton wheels



G108A9  
Plastic tool protection

# GRS926 WORLD'S SECOND FASTEST TRUCK TIRE CHANGER

# G9156.11N SUPER DUTY

Made in Italy



## GRS926

Truck tire changer for both road-side and workshop service, suitable for closed vans and/or small workshops.

Controls on console

Hydraulic chucking table

Suitable also for agricultural tries

### HYDRAULIC UP / DOWN MOVEMENT



\*MINIMUM HEIGHT 13" (330 mm) / MINIMUM CLAMPING 4" (90 mm)

Great for changing difficult light truck tires

### TECHNICAL DATA

Chucking unit rotation motor	1,1 HP
Hydraulic drive unit motor	2 HP
Rim Ø	11 1/2" (288 mm)
Max. wheel Ø	51" (1294mm)
Max. allowed wheel width	37.4" (952mm)
Weight	833 lbs
Bead breaker power	16000 N
Max wheel weight	2645 lbs
Chuck rotation speed	8 rpm

## QUICK DEMOUNTING



## QUICK MOUNTING



## SUPER DUTY



G9156.11N

## G9156.11N

Controls with lever type hydraulic distributors

### TUBE AND TUBELESS



### QUICK MANUAL ROTATION

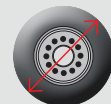


Spring loaded manual rotation tool.



11" - 43"

(280-1092mm)



11" - 56"

(280-1422mm)

with G108A12



90.5" (2300mm)

43" (1000 mm)

### TECHNICAL DATA

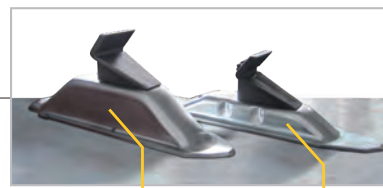
Chucking unit rotation motor	3 hp
Hydraulic drive unit motor	2 hp
Rim Ø	11" - 43" (280-1092mm)
Rim Ø with G108A1	11" - 56" (280-1422mm)
Max. wheel Ø	90.5" (2300mm)
Max allowed wheel width	43" (1000mm)



# AUTOMOTIVE TIRE CHANGER ACCESSORIES

## PROTECTIONS

**\* STANDARD**  
Anti-skid plastic insert



Higher clamps  
20" / 22"  
Standard clamps  
18" / 20" OLD / 22" OLD



G800A5 (4 x kit) → 18"  
→ 20" OLD  
→ 22" OLD



G800A98 (4 x kit) → 20" NEW  
→ 22" NEW



G800A6 (4 x kit) → 24"  
→ 26"  
→ 28"



G800A7 (4 x kit) → 30"  
Clamp protection kit  
G800A7K - Kit 10 x G800A7



G800A54 (4 x kit) → G800A7  
Protection kit for inside clamping  
G800A54K - Kit 10 x G800A54

G800A5K - Kit 10 x G800A5

G800A98K - Kit 10 x G800A98

G800A6K - Kit 10 x G800A6



G800A8 (2 x kit) → G8 xx Series  
Tool protection kit  
G800A8K - Kit 10 x G800A8



G84A17 (2 x kit) → G7 xx Series  
Tool protection kit  
G84A17K - Kit 10 x G84A17



G800A11  
Bead breaker blade protection  
G800A11K - Kit 5 x G800A11



G800A32  
Run Flat bead protection



## LEVERLESS TOOLS FOR SAFE CHANGING



G800A72  
Car plastic tool with hub  
for quick coupling



G800A74  
Motorbike plastic tool  
with hub for quick  
coupling



G800A76  
Tool for ATV wheels with  
hub for quick coupling



G800A73  
Pivoting plastic tool with  
hub for quick coupling



G800A110  
Tool suitable also for rims  
with protruding spokes with  
hub for quick coupling.



## HELPER SWING ARM



PLUS91SA for G7246  
PLUS91N for G7240  
Pneumatic helper with  
rotating arm



G800A69 →  
PLUS91SA  
Wheel lift



G800A35  
Pneumatic wheel lifter.

## HELPER TILTBACK



PLUS83H  
Air-driven helper with  
rotating arm



G800A116  
Additional hexagonal arm  
OPTION



RAV Equipment U.S.A.  
1-877-213-2137  
Email: sales@ravequipment.com  
www.ravequipment.com

Distributed by

CHANGERS.2019.07



Technical data presented in this catalogue may vary. Pictures reproduced are only indicative.